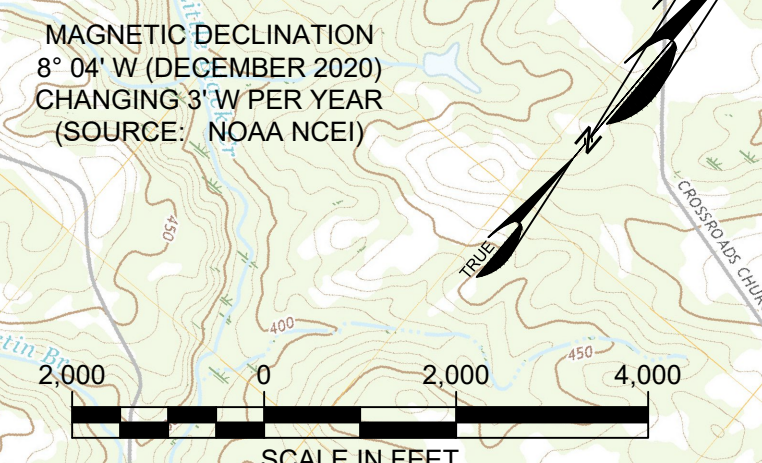


NOTES

- ALL LATITUDE/LONGITUDE COORDINATES ARE IN NAD 83, AND ALL VERTICAL ELEVATIONS ARE IN NAVD 88.
- FEDERAL AVIATION REGULATIONS (FAR) PART 77 SPECIFIES CLEARANCE REQUIREMENTS FOR ROADS, RAILROADS, AND WATERWAYS AS FOLLOWS:
 - 17 FEET FOR AN INTERSTATE HIGHWAY,
 - 15 FEET FOR ANY OTHER PUBLIC ROADWAY,
 - 10 FEET OR THE HEIGHT OF THE HIGHEST MOBILE OBJECT THAT WOULD NORMALLY TRAVERSE THE ROAD, WHICHEVER IS GREATER, FOR A PRIVATE ROAD,
 - 23 FEET FOR A RAILROAD, AND
 - FOR A WATERWAY OR ANY OTHER TRAVERSE WAY NOT PREVIOUSLY MENTIONED, AN AMOUNT EQUAL TO THE HEIGHT OF THE HIGHEST MOBILE OBJECT THAT WOULD NORMALLY TRAVERSE IT.
- THE CITY OF PAGELAND (SPONSOR) AND THE COUNTY OF CHESTERFIELD HAVE NEITHER ZONING NOR AN OVERLAY DISTRICT IN PLACE TO PROTECT THE AIRPORT AND SURROUNDING AIRSPACE.
- REFER TO INNER APPROACH SURFACES (SHEETS 7-9) AND THE DEPARTURE SURFACE (SHEETS 12-13) FOR CLOSE IN OBSTRUCTIONS.



#	CITY	TYPE	ELEVATION AT BASE	AGL	AMSL	SURFACE EFFECTED	PART 77 SURFACE ELEV.	PENETRATION	LIGHTING	MARKING	FAA STUDY	DOF DATE	DISPOSITION
1	JEFFERSON	TOWER	517	259	776	NONE			DUAL RED WITH MEDIUM INTENSITY WHITE STROBE	NONE	2003AS005502OE	NOV 29 2020	NO ACTION
2	MT. CROGHAN	TOWER	466	290	756	NONE			DUAL RED WITH MEDIUM INTENSITY WHITE STROBE	NONE	2013AS011720E	NOV 29 2020	NO ACTION
3	PAGELAND	TOWER	631	266	897	NONE			DUAL RED WITH MEDIUM INTENSITY WHITE STROBE	NONE	2016AS012685OE	NOV 29 2020	NO ACTION
4	PAGELAND	TOWER	721	181	902	NONE			UNKNOWN	UNKNOWN		NOV 29 2020	NO ACTION
5	PAGELAND	TOWER	658	310	968	NONE			DUAL RED WITH MEDIUM INTENSITY WHITE STROBE	NONE	2002AS000826OE	NOV 29 2020	NO ACTION
6	PAGELAND	TOWER	714	199	913	NONE			NONE	NONE	2013AS010400E	NOV 29 2020	NO ACTION
7	PAGELAND	TOWER	717	214	931	NONE			RED LIGHTING	MARKED	0000 50005950E	NOV 29 2020	NO ACTION
8	PAGELAND	TOWER	712	213	925	NONE			MEDIUM INTENSITY WHITE STROBE	NONE	1994AS001710E	NOV 29 2020	NO ACTION
9	PAGELAND	TOWER	560	179	739	NONE	827	-88	NONE	NONE	2018AS011400E	NOV 29 2020	NO ACTION
10	MT. CROGHAN	TOWER	447	312	759	NONE			DUAL RED WITH MEDIUM INTENSITY WHITE STROBE	NONE	2018AS013051OE	NOV 29 2020	NO ACTION
11	MT. CROGHAN	TOWER	449	307	756	NONE			DUAL RED WITH MEDIUM INTENSITY WHITE STROBE	NONE	2003AS003996OE	NOV 29 2020	NO ACTION
12	PAGELAND	TOWER	659	193	812	NONE			NONE	UNKNOWN		NOV 29 2020	NO ACTION
13	PAGELAND	TOWER	659	220	879	NONE			RED LIGHTING	MARKED	1983AS005000OE	NOV 29 2020	NO ACTION
14	PAGELAND	TOWER	635	276	905	NONE			DUAL RED WITH MEDIUM INTENSITY WHITE STROBE	NONE	2006AS004287OE	NOV 29 2020	NO ACTION

DATE	REVISIONS
	1
	2
	3
	4
	5

DESIGNED BY:	TCM
PROJECT ENG.:	JAS
PROJECT NO.:	3509-2001
DRAWN BY:	TCM
CHECKED BY:	JAS
DATE ISSUED:	MAY 14, 2021



PAGELAND AIRPORT

AIRPORT LAYOUT
PLAN UPDATE
AIRPORT AIRSPACE DRAWING -
PLAN

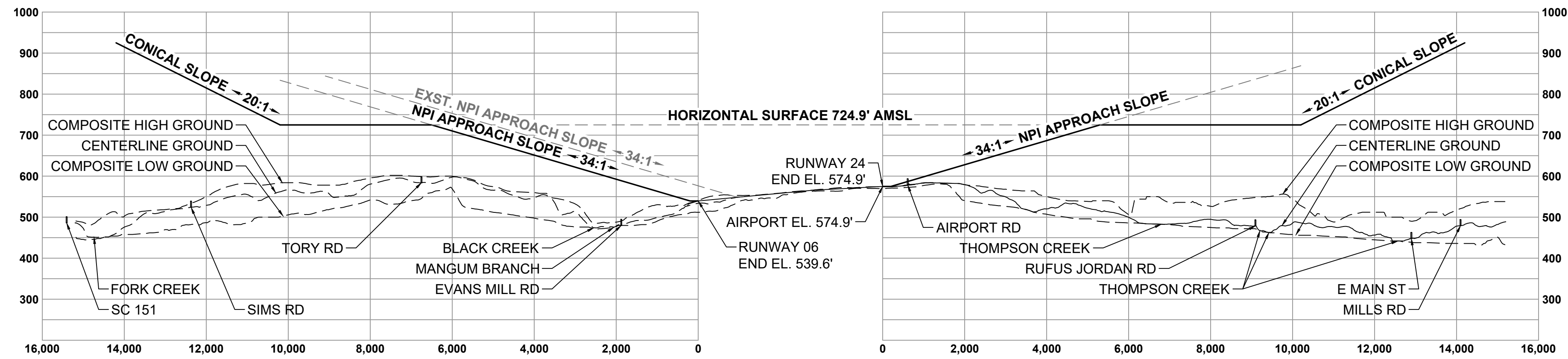
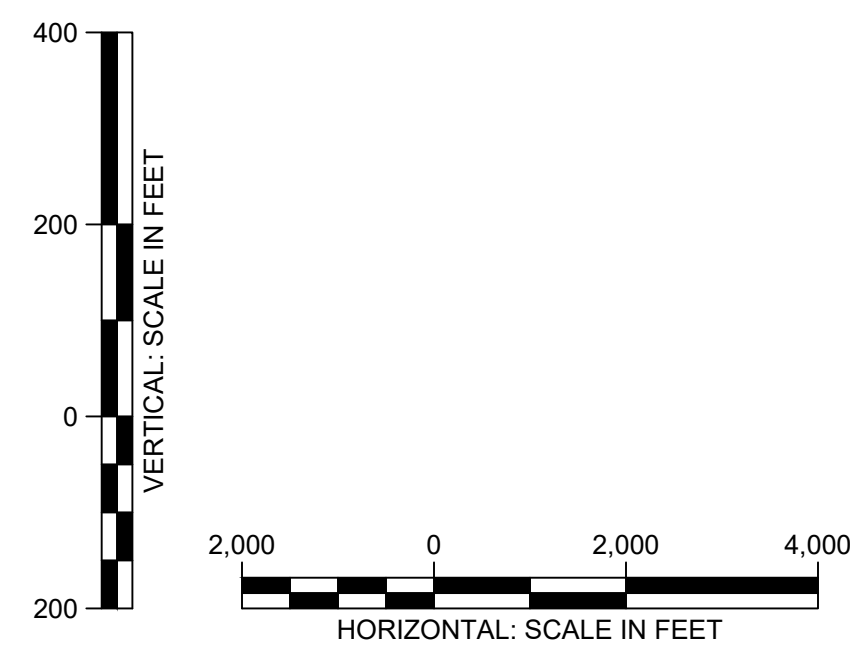
FILE NAME: 2001-PYG-05-06-Airspace.dwg
SCALE: 1" = 2,000'

SHT. **5**

TALBERT, BRIGHT & ELLINGTON
ENGINEERING & PLANNING CONSULTANTS
3525 WHITEHALL PARK DRIVE, SUITE 210
CHARLOTTE, NORTH CAROLINA 28273
PHONE: 704-426-6070 FAX: 704-426-6080
NC LICENSE NO. C-1163

T:\3509 PAGES\A05001 - All\Pages\A05001.dwg (Airspace.dwg) - May 17, 2021, 1:24pm

T:\2001\PAGELAND\2001 - Airport\2001-PYG-05-Airspace.dwg, May 17, 2021, 1:24pm



PAGELAND AIRPORT

AIRPORT LAYOUT
PLAN UPDATE
AIRPORT AIRSPACE DRAWING -
PROFILE

FILE NAME: 2001-PYG-05-06-Airspace.dwg
SCALE: HORIZONTAL: 1" = 2,000'
VERTICAL: 1" = 20'

REVISIONS	DATE
1	
2	
3	
4	
5	

DESIGNED BY:	TGM
PROJECT ENG.:	JAS
PROJECT NO.:	3509-2001
DRAWN BY:	TGM
CHECKED BY:	JAS
DATE ISSUED:	MAY 14, 2021

SHT.

6

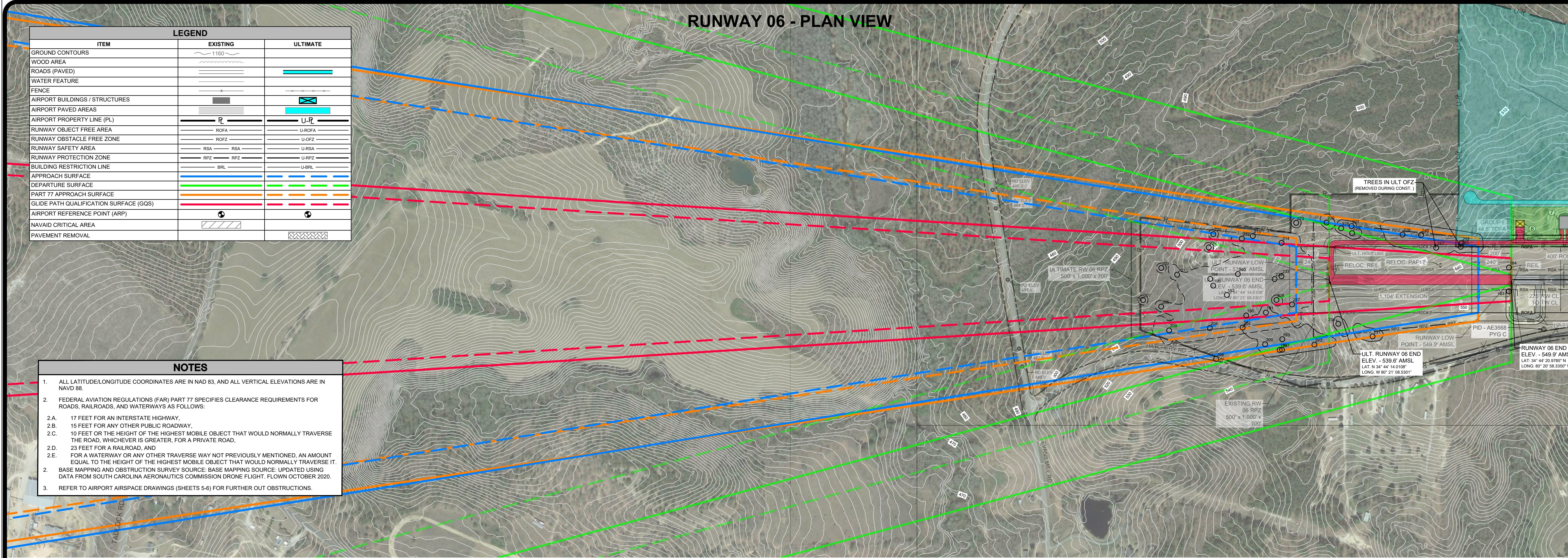
TALBERT, BRIGHT & ELLINGTON
ENGINEERING & PLANNING CONSULTANTS
3525 WHITEHALL PARK DRIVE, SUITE 210
CHARLOTTE, NORTH CAROLINA 28273
PHONE: 704-426-6070 FAX: 704-426-6080
NC LICENSE NO. C-1163

RUNWAY 06 - PLAN VIEW

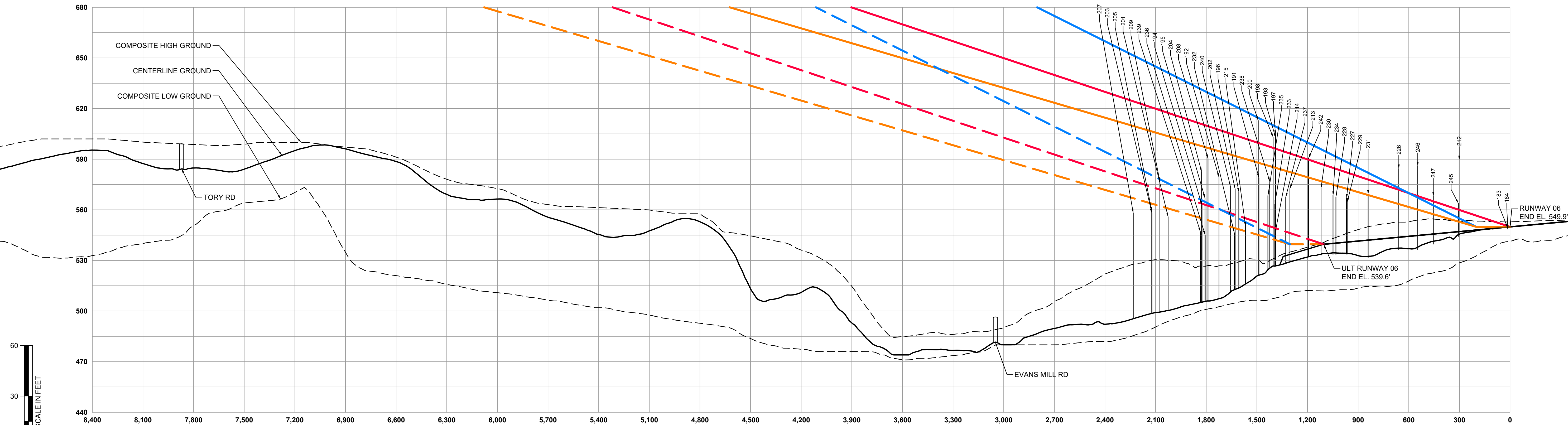
ITEM	EXISTING	ULTIMATE
GROUND CONTOURS	1160	
WOOD AREA		
ROADS (PAVED)		
WATER FEATURE		
FENCE		
AIRPORT BUILDINGS / STRUCTURES		
AIRPORT PAVED AREAS		
AIRPORT PROPERTY LINE (PL)		U-PL
RUNWAY OBJECT FREE AREA	ROFA	U-ROFA
RUNWAY OBSTACLE FREE ZONE	ROFZ	U-ROFZ
RUNWAY SAFETY AREA	RSA	U-RSA
RUNWAY PROTECTION ZONE	RPZ	U-RPZ
BUILDING RESTRICTION LINE	BRL	U-BRL
APPROACH SURFACE		
DEPARTURE SURFACE		
PART 77 APPROACH SURFACE		
GLIDE PATH QUALIFICATION SURFACE (GQS)		
AIRPORT REFERENCE POINT (ARP)		
NAVAID CRITICAL AREA		
PAVEMENT REMOVAL		

NOTES

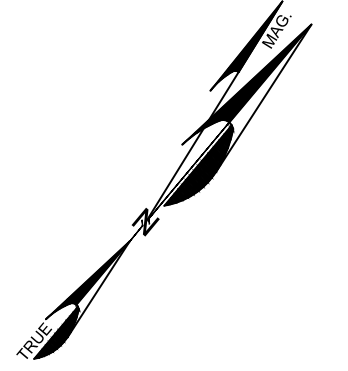
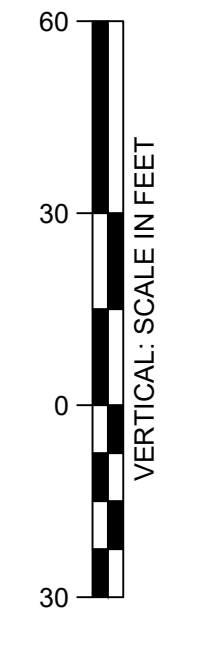
- ALL LATITUDE/LONGITUDE COORDINATES ARE IN NAD 83, AND ALL VERTICAL ELEVATIONS ARE IN NAVD 88.
- FEDERAL AVIATION REGULATIONS (FAR) PART 77 SPECIFIES CLEARANCE REQUIREMENTS FOR ROADS, RAILROADS, AND WATERWAYS AS FOLLOWS:
 - 17 FEET FOR AN INTERSTATE HIGHWAY,
 - 15 FEET FOR ANY OTHER PUBLIC ROADWAY,
 - 10 FEET OR THE HEIGHT OF THE HIGHEST MOBILE OBJECT THAT WOULD NORMALLY TRAVERSE THE ROAD, WHICHEVER IS GREATER, FOR A PRIVATE ROAD,
 - 23 FEET FOR A RAILROAD, AND
 - FOR A WATERWAY OR ANY OTHER TRAVERSE WAY NOT PREVIOUSLY MENTIONED, AN AMOUNT EQUAL TO THE HEIGHT OF THE HIGHEST MOBILE OBJECT THAT WOULD NORMALLY TRAVERSE IT.
- BASE MAPPING AND OBSTRUCTION SURVEY SOURCE: BASE MAPPING SOURCE, UPDATED USING DATA FROM SOUTH CAROLINA AERONAUTICS COMMISSION DRONE FLIGHT, FLOWN OCTOBER 2020.
- REFER TO AIRPORT AIRSPACE DRAWINGS (SHEETS 5-8) FOR FURTHER OUT OBSTRUCTIONS.



RUNWAY 06 - PROFILE VIEW



MAGNETIC DECLINATION
8° 04' W (DECEMBER 2020)
CHANGING 3" W PER YEAR
(SOURCE: NOAA NCEI)



REVISIONS	DATE
1	
2	
3	
4	
5	

DESIGNED BY:	TGM
PROJECT ENG.:	JAS
PROJECT NO.:	3509-2001
DRAWN BY:	TGM
CHECKED BY:	JAS
DATE ISSUED:	MAY 14, 2021

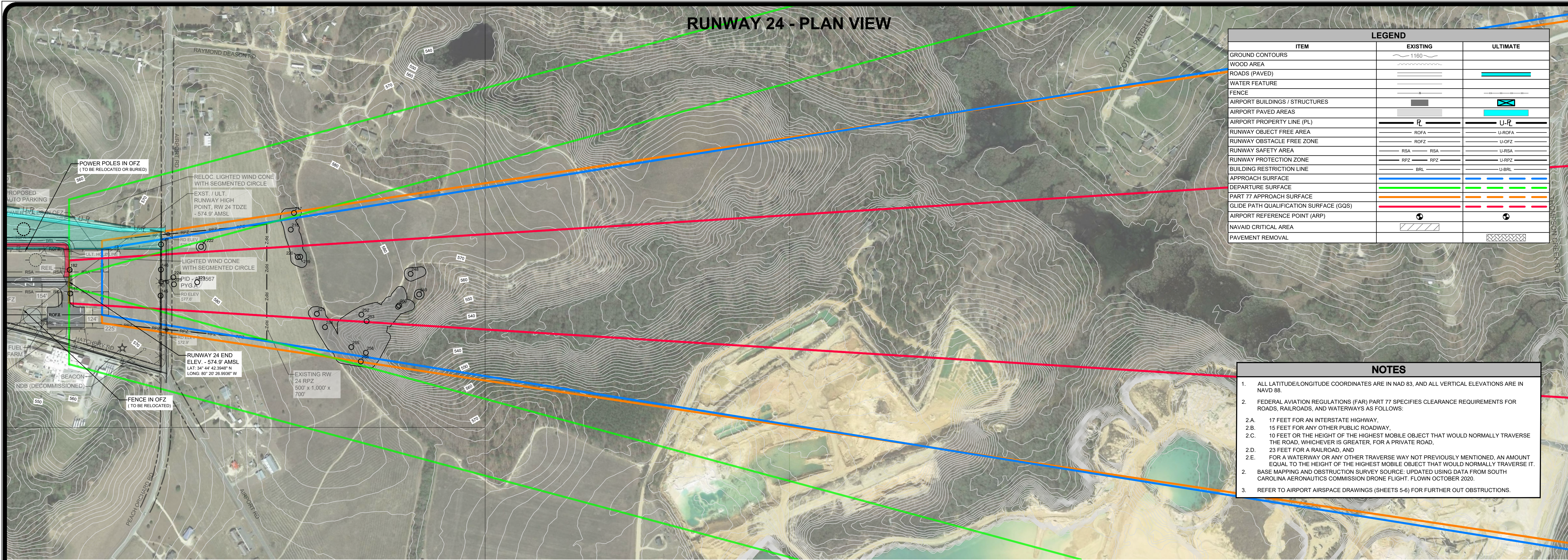


PAGELAND AIRPORT

AIRPORT LAYOUT
PLAN UPDATE
**RUNWAY 06 INNER APPROACH SURFACES -
PLAN AND PROFILE**
FILE NAME: 2001-PYG-07-09-Inner Approach.dwg
SCALE: HORIZONTAL: 1" = 300'
SCALE: VERTICAL: 1" = 30'

**TALBERT, BRIGHT
& ELLINGTON**
ENGINEERING & PLANNING CONSULTANTS
3525 WHITEHALL PARK DRIVE, SUITE 210
CHARLOTTE, NORTH CAROLINA 28273
PHONE: 704-426-6070 FAX: 704-426-6080
NC LICENSE NO. C-1163

RUNWAY 24 - PLAN VIEW



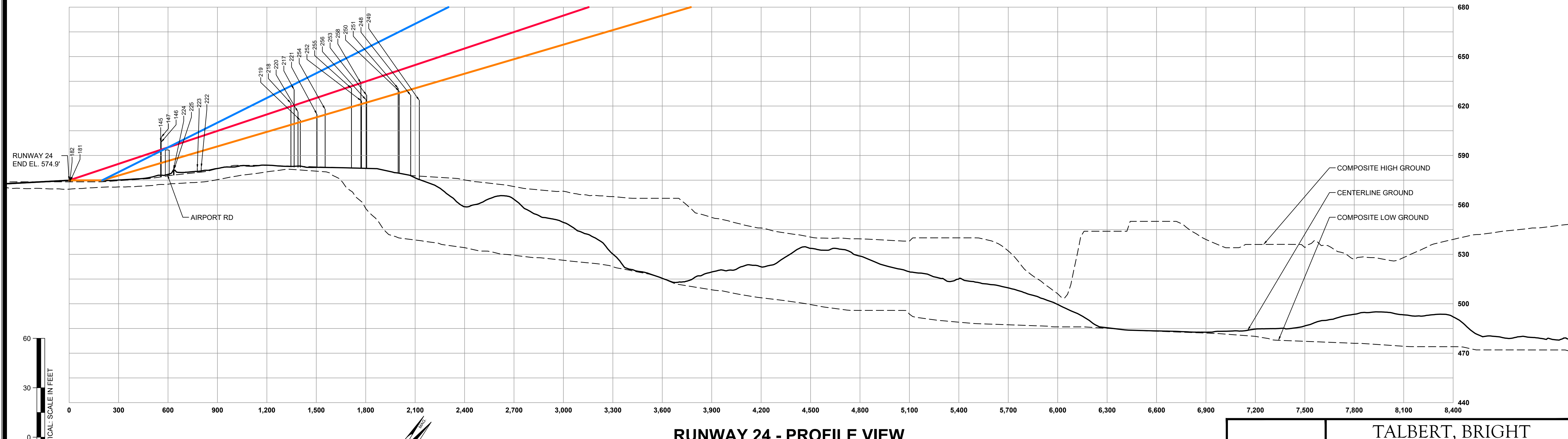
ITEM	LEGEND	
	EXISTING	ULTIMATE
GROUND CONTOURS	1160	
WOOD AREA		
ROADS (PAVED)		
WATER FEATURE		
FENCE		
AIRPORT BUILDINGS / STRUCTURES		
AIRPORT PAVED AREAS		
AIRPORT PROPERTY LINE (PL)		
RUNWAY OBJECT FREE AREA	ROFA	U-ROFA
RUNWAY OBSTACLE FREE ZONE	ROFZ	U-ROFZ
RUNWAY SAFETY AREA	RSA	U-RSA
RUNWAY PROTECTION ZONE	RPZ	U-RPZ
BUILDING RESTRICTION LINE	BRL	U-BRL
APPROACH SURFACE		
DEPARTURE SURFACE		
PART 77 APPROACH SURFACE		
GLIDE PATH QUALIFICATION SURFACE (GQS)		
AIRPORT REFERENCE POINT (ARP)		
NAVAID CRITICAL AREA		
PAVEMENT REMOVAL		

- NOTES**
- ALL LATITUDE/LONGITUDE COORDINATES ARE IN NAD 83, AND ALL VERTICAL ELEVATIONS ARE IN NAVD 88.
 - FEDERAL AVIATION REGULATIONS (FAR) PART 77 SPECIFIES CLEARANCE REQUIREMENTS FOR ROADS, RAILROADS, AND WATERWAYS AS FOLLOWS:
 - 17 FEET FOR AN INTERSTATE HIGHWAY,
 - 15 FEET FOR ANY OTHER PUBLIC ROADWAY,
 - 10 FEET OR THE HEIGHT OF THE HIGHEST MOBILE OBJECT THAT WOULD NORMALLY TRAVERSE THE ROAD, WHICHEVER IS GREATER, FOR A PRIVATE ROAD,
 - 23 FEET FOR A RAILROAD, AND
 - FOR A WATERWAY OR ANY OTHER TRAVERSE WAY NOT PREVIOUSLY MENTIONED, AN AMOUNT EQUAL TO THE HEIGHT OF THE HIGHEST MOBILE OBJECT THAT WOULD NORMALLY TRAVERSE IT.
 - BASE MAPPING AND OBSTRUCTION SURVEY SOURCE: UPDATED USING DATA FROM SOUTH CAROLINA AERONAUTICS COMMISSION DRONE FLIGHT- FLOWN OCTOBER 2021.
 - REFER TO AIRPORT AIRSPACE DRAWINGS (SHEETS 5-8) FOR FURTHER OUT OBSTRUCTIONS.

DESIGNED BY:	TSM	DATE
PROJECT ENG:	JAS	1
PROJECT NO.:	3509-2001	2
DRAWN BY:	TSM	3
CHECKED BY:	JAS	4
DATE ISSUED:	MAY 14, 2021	5



PAGELAND AIRPORT



RUNWAY 24 - PROFILE VIEW

VERTICAL SCALE IN FEET

HORIZONTAL SCALE IN FEET

MAGNETIC DECLINATION
8° 04' W (DECEMBER 2020)
CHANGING 3' W PER YEAR
(SOURCE: NOAA NCEI)

TALBERT, BRIGHT & ELLINGTON
ENGINEERING & PLANNING CONSULTANTS
3525 WHITEHALL PARK DRIVE, SUITE 210
CHARLOTTE, NORTH CAROLINA 28273
PHONE: 704-426-6070 FAX: 704-426-6080
NC LICENSE NO. C-1163

AIRPORT LAYOUT
PLAN UPDATE

RUNWAY 24 INNER APPROACH SURFACES -
PLAN AND PROFILE

FILE NAME: 2001-PYG-07-09-Inner Approach.dwg
SCALE: HORIZONTAL: 1" = 300'
SCALE: VERTICAL: 1" = 30'

OBSTRUCTION TABLE - EXISTING RUNWAY 06 GLIDE PATH QUALIFICATION SURFACE						
#	DESCRIPTION	OBJECT ELEV. (AGL)	OBJECT ELEV. (AMSL)	SURFACE ELEVATION	PENETRATION	DISPOSITION
184	REIL	0.8'	548.6'	550.4'	-1.8'	NO ACTION
183	REIL	0.8'	549.4'	550.4'	-1.0'	NO ACTION

OBSTRUCTION TABLE - EXISTING RUNWAY 06 PART 77 APPROACH SURFACE						
#	DESCRIPTION	OBJECT ELEV. (AGL)	OBJECT ELEV. (AMSL)	SURFACE ELEVATION	PENETRATION	DISPOSITION
191	TREE	55.4'	579.0'	587.8'	-8.8'	NO ACTION
193	TREE	80.7'	602.6'	584.9'	17.8'	TRIM / REMOVE
197	TREE	82.2'	604.6'	584.9'	19.7'	TRIM / REMOVE
198	TREE	80.1'	603.1'	585.3'	17.8'	TRIM / REMOVE
200	TREE	89.0'	612.9'	587.3'	25.0'	TRIM / REMOVE
208	TREE	67.2'	590.4'	596.7'	-9.2'	NO ACTION
212	TREE	58.5'	589.6'	562.9'	36.7'	TRIM / REMOVE
213	TREE	56.3'	572.6'	582.4'	-9.8'	NO ACTION
226	TREE	64.4'	584.4'	583.4'	20.9'	TRIM / REMOVE
227	TREE	50.4'	567.0'	572.5'	-5.5'	NO ACTION
228	TREE	49.8'	567.7'	574.4'	-6.7'	NO ACTION
229	TREE	45.8'	564.5'	572.4'	-7.9'	NO ACTION
230	TREE	56.6'	572.9'	577.0'	-4.1'	NO ACTION
231	TREE	19.2'	565.2'	568.8'	0.4'	TRIM / REMOVE
234	TREE	25.7'	566.5'	574.9'	-8.3'	NO ACTION
238	TREE	46.8'	576.8'	585.9'	-9.1'	NO ACTION
242	TREE	59.7'	590.6'	579.1'	11.4'	TRIM / REMOVE
245	TREE	32.1'	563.9'	553.0'	10.9'	TRIM / REMOVE
246	TREE	62.6'	585.9'	560.1'	25.8'	TRIM / REMOVE
247	TREE	40.2'	568.0'	557.4'	10.5'	TRIM / REMOVE

OBSTRUCTION TABLE - EXISTING RUNWAY 06 TERPS APPROACH SURFACE						
#	DESCRIPTION	OBJECT ELEV. (AGL)	OBJECT ELEV. (AMSL)	SURFACE ELEVATION	PENETRATION	DISPOSITION
193	TREE	80.7'	602.6'	609.3'	-6.7'	NO ACTION
200	TREE	89.0'	612.9'	614.5'	-1.6'	NO ACTION
247	TREE	40.2'	568.0'	562.7'	5.3'	TRIM / REMOVE
245	TREE	32.1'	563.9'	555.3'	8.6'	TRIM / REMOVE
226	TREE	64.4'	584.4'	572.9'	11.9'	TRIM / REMOVE

OBSTRUCTION TABLE - ULTIMATE RUNWAY 06 GLIDE PATH QUALIFICATION SURFACE						
#	DESCRIPTION	OBJECT ELEV. (AGL)	OBJECT ELEV. (AMSL)	SURFACE ELEVATION	PENETRATION	DISPOSITION
194	TREE	57.5'	562.8'	563.6'	-0.9'	NO ACTION
195	TREE	60.6'	565.9'	563.0'	3.8'	TRIM / REMOVE
233	TREE	37.0'	563.4'	549.3'	14.1'	TRIM / REMOVE
240	TREE	63.8'	574.2'	558.0'	16.2'	TRIM / REMOVE
235	TREE	44.2'	568.4'	550.6'	17.8'	TRIM / REMOVE
192	TREE	70.6'	579.2'	569.3'	10.0'	TRIM / REMOVE
238	TREE	46.8'	576.8'	550.2'	26.5'	TRIM / REMOVE

OBSTRUCTION TABLE - ULTIMATE RUNWAY 06 PART 77 APPROACH SURFACE						
#	DESCRIPTION	OBJECT ELEV. (AGL)	OBJECT ELEV. (AMSL)	SURFACE ELEVATION	PENETRATION	DISPOSITION
191	TREE	55.4'	579.0'	545.0'	34.0'	TRIM / REMOVE
192	TREE	70.6'	579.2'	552.0'	27.3'	TRIM / REMOVE
194	TREE	57.5'	562.8'	554.9'	7.8'	TRIM / REMOVE
195	TREE	60.6'	565.9'	554.4'	12.9'	TRIM / REMOVE
196	TREE	55.2'	570.5'	548.5'	22.0'	TRIM / REMOVE
201	TREE	54.9'	555.9'	560.8'	-4.9'	NO ACTION
202	TREE	54.1'	572.4'	549.2'	23.3'	TRIM / REMOVE
203	TREE	60.8'	558.0'	563.7'	-5.6'	NO ACTION
204	TREE	71.5'	562.3'	555.0'	27.6'	TRIM / REMOVE
205	TREE	58.1'	559.5'	563.7'	-4.3'	NO ACTION
207	TREE	60.5'	558.2'	566.9'	-8.7'	NO ACTION
209	TREE	70.5'	576.7'	562.3'	14.4'	TRIM / REMOVE
214	TREE	26.4'	545.8'	542.2'	3.6'	TRIM / REMOVE
215	TREE	34.0'	550.2'	547.3'	2.9'	TRIM / REMOVE
232	TREE	31.8'	546.4'	549.3'	-2.9'	NO ACTION
233	TREE	37.9'	563.4'	542.2'	21.2'	TRIM / REMOVE
235	TREE	44.2'	568.4'	543.4'	25.0'	TRIM / REMOVE
236	TREE	38.0'	545.1'	554.4'	-9.3'	NO ACTION
237	TREE	33.3'	567.6'	540.3'	27.3'	TRIM / REMOVE
238	TREE	46.8'	576.8'	543.1'	33.7'	TRIM / REMOVE
239	TREE	38.1'	547.1'	555.2'	-8.2'	NO ACTION
240	TREE	63.8'	574.2'	550.0'	24.2'	TRIM / REMOVE

OBSTRUCTION TABLE - ULTIMATE RUNWAY 06 TERPS APPROACH SURFACE						
#	DESCRIPTION	OBJECT ELEV. (AGL)	OBJECT ELEV. (AMSL)	SURFACE ELEVATION	PENETRATION	DISPOSITION
191	TREE	55.4'	579.0'	548.8'	30.2'	TRIM / REMOVE
192	TREE	70.6'	579.2'	560.6'	18.6'	TRIM / REMOVE
194	TREE	57.5'	562.8'	565.7'	-2.9'	NO ACTION
195	TREE	60.6'	565.9'	564.8'	2.1'	TRIM / REMOVE
196	TREE	55.2'	570.5'	554.7'	15.8'	TRIM / REMOVE
209	TREE	70.5'	576.7'	578.1'	-1.4'	NO ACTION
232	TREE	31.8'	546.4'	556.1'	-9.7'	NO ACTION
233	TREE	37.9'	563.4'	544.1'	19.3'	TRIM / REMOVE
235	TREE	44.2'	568.4'	548.1'	22.3'	TRIM / REMOVE
237	TREE	33.3'	567.6'	540.8'	26.8'	TRIM / REMOVE
238	TREE	46.8'	576.8'	545.6'	31.2'	TRIM / REMOVE
240	TREE	63.8'	574.2'	557.3'	17.0'	TRIM / REMOVE

OBSTRUCTION TABLE - EXISTING / ULTIMATE RUNWAY 24 GLIDE PATH QUALIFICATION SURFACE						
#	DESCRIPTION	OBJECT ELEV. (AGL)	OBJECT ELEV. (AMSL)	SURFACE ELEVATION	PENETRATION	DISPOSITION
145	POLE	21.5'	598.0'	593.4'	4.6'	TRIM / REMOVE
146	POLE	21.3'	598.0'	593.5'	4.5'	TRIM / REMOVE
191	REIL	0.8'	574.6'	574.9'	-0.3'	NO ACTION
182	REIL	0.8'	574.3'	574.9'	-0.6'	NO ACTION
220	TREE	33.0'	616.4'	621.2'	-4.8'	NO ACTION
253	TREE	58.2'	626.5'	635.1'	-6.9'	NO ACTION

OBSTRUCTION TABLE - EXISTING / ULTIMATE RUNWAY 24 PART 77 APPROACH SURFACE						
#	DESCRIPTION	OBJECT ELEV. (AGL)	OBJECT ELEV. (AMSL)	SURFACE ELEVATION	PENETRATION	DISPOSITION
145	POLE	21.5'	598.0'	585.4'	12.6'	LIGHT / LOWER
146	POLE	21.3'	598.0'	585.4'	12.6'	LIGHT / LOWER
147	POLE	25.9'	601.0'	588.4'	15.6'	LIGHT / LOWER
217	TREE	47.6'	629.9'	609.2'	20.7'	TRIM / REMOVE
218	TREE	38.7'	621.7'	608.6'	13.1'	TRIM / REMOVE
219	TREE	28.0'	611.4'	610.3'	1.1'	TRIM / REMOVE
220	TREE	33.0'	616.4'	609.9'	6.5'	TRIM / REMOVE
221	TREE	32.9'	614.9'	613.3'	1.7'	TRIM / REMOVE
222	TREE	3.4'	582.6'	592.6'	-10.0'	NO ACTION
223	TREE	2.6'	582.2'	591.9'	-9.7'	NO ACTION
224	TREE	3.8'	581.6'	587.6'	-6.0'	NO ACTION
225	TREE	3.5'	581.6'	587.8'	-6.2'	NO ACTION
248	TREE	48.8'	626.3'	630.0'	-3.5'	NO ACTION
249	TREE	48.8'	623.4'	631.5'	-8.1'	NO ACTION
250	TREE	51.7'	629.0'	627.9'	1.0'	TRIM / REMOVE
251	TREE	53.9'	630.7'	627.8'	2.9'	TRIM / REMOVE
252	TREE	44.0'	623.1'	621.2'	1.9'	TRIM / REMOVE
253	TREE	56.2'	626.5'	622.1'	4.3'	TRIM / REMOVE
254	TREE	37.9'	618.0'	614.7'	3.3'	TRIM / REMOVE
255	TREE	57.0'	639.7'	619.4'	11.3'	TRIM / REMOVE
256	TREE	57.7'	623.8'	622.0'	1.8'	TRIM / REMOVE
258	TREE	60.2'	633.9'	621.1'	12.8'	TRIM / REMOVE

OBSTRUCTION TABLE - EXISTING / ULTIMATE RUNWAY 24 TERPS APPROACH SURFACE						
#	DESCRIPTION	OBJECT ELEV. (AGL)	OBJECT ELEV. (AMSL)	SURFACE ELEVATION	PENETRATION	DISPOSITION
146	POLE	21.3'	598.0'	592.8'	5.2'	LIGHT / LOWER
145	POLE	21.5'	598.0'	592.7'	5.3'	LIGHT / LOWER
147	POLE	25.9'	601.0'	592.8'	8.2'	LIGHT / LOWER

NOTES

- ALL LATITUDE/LONGITUDE COORDINATES ARE IN NAD 83, AND ALL VERTICAL ELEVATIONS ARE IN NAVD 88.
- FEDERAL AVIATION REGULATIONS (FAR) PART 77 SPECIFIES CLEARANCE REQUIREMENTS FOR ROADS, RAILROADS, AND WATERWAYS AS FOLLOWS:
 - 17 FEET FOR AN INTERSTATE HIGHWAY.
 - 15 FEET FOR ANY OTHER PUBLIC ROADWAY.
 - 10 FEET OR THE HEIGHT OF THE HIGHEST MOBILE OBJECT THAT WOULD NORMALLY TRAVERSE THE ROAD, WHICHEVER IS GREATER, FOR A PRIVATE ROAD.
- 23 FEET FOR A RAILROAD, AND
 - FOR A WATERWAY OR ANY OTHER TRAVERSE WAY NOT PREVIOUSLY MENTIONED, AN AMOUNT EQUAL TO THE HEIGHT OF THE HIGHEST MOBILE OBJECT THAT WOULD NORMALLY TRAVERSE IT.
- BASE MAPPING AND OBSTRUCTION SURVEY SOURCE: UPDATED USING DATA FROM SOUTH CAROLINA AERONAUTICS COMMISSION DRONE FLIGHT, FLOWN OCTOBER 2020.
- THE TRIGGERING EVENT FOR THE MAJORITY OF THE OBSTRUCTIONS IS SIMPLE TREE GROWTH. THE EXISTING AND ULTIMATE CONDITIONS WERE DETERMINED INDIVIDUALLY, SO IF AN OBSTACLE IS AN EXISTING OBSTRUCTION IT COULD BE AN ULTIMATE OBSTRUCTION. THE ULTIMATE TRIGGERING EVENT FOR RUNWAY 06-24 WAS EXTENSION OF RUNWAY 06. TIMEFRAME / EXPECTED DATE FOR REMOVAL IS BASED ON FUNDING AVAILABILITY AND PRIORITY, AS OUTLINED ON THE CIP. FUNDING TABLE ILLUSTRATING 0 TO 5 - YEAR, 6 TO 10 - YEAR, AND 10+ YEAR PROJECTS ARE OUTLINED IN THE ALP NARRATIVE.

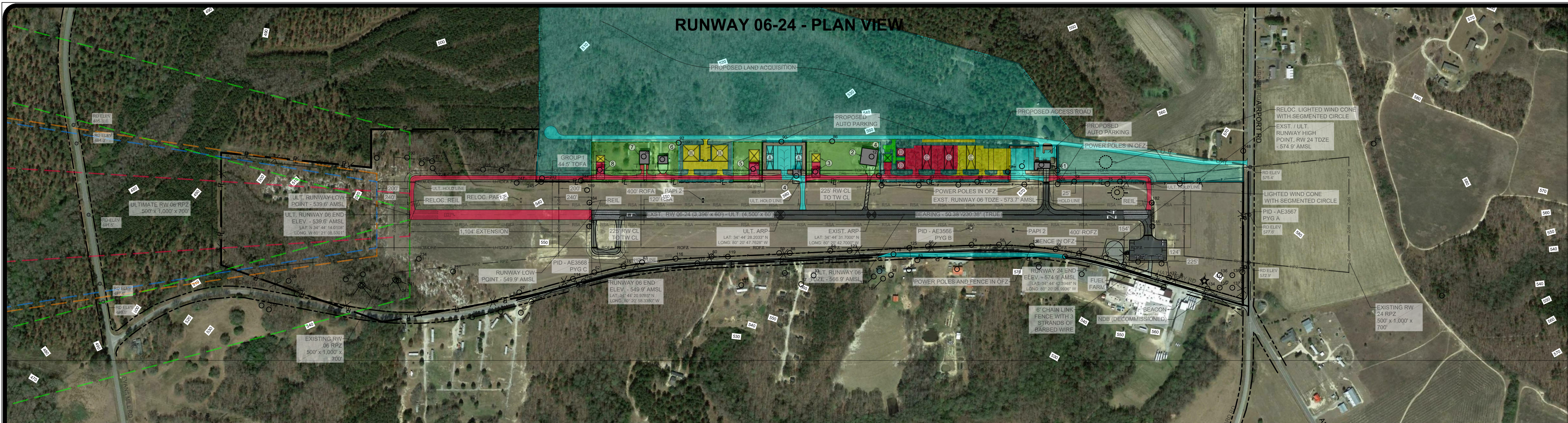
TALBERT, BRIGHT & ELLINGTON
 ENGINEERING & PLANNING CONSULTANTS
 3525 WHITEHALL PARK DRIVE, SUITE 210
 CHARLOTTE, NORTH CAROLINA 28273
 PHONE: 704-426-6070 FAX: 704-426-6080
 NC LICENSE NO. C-1163



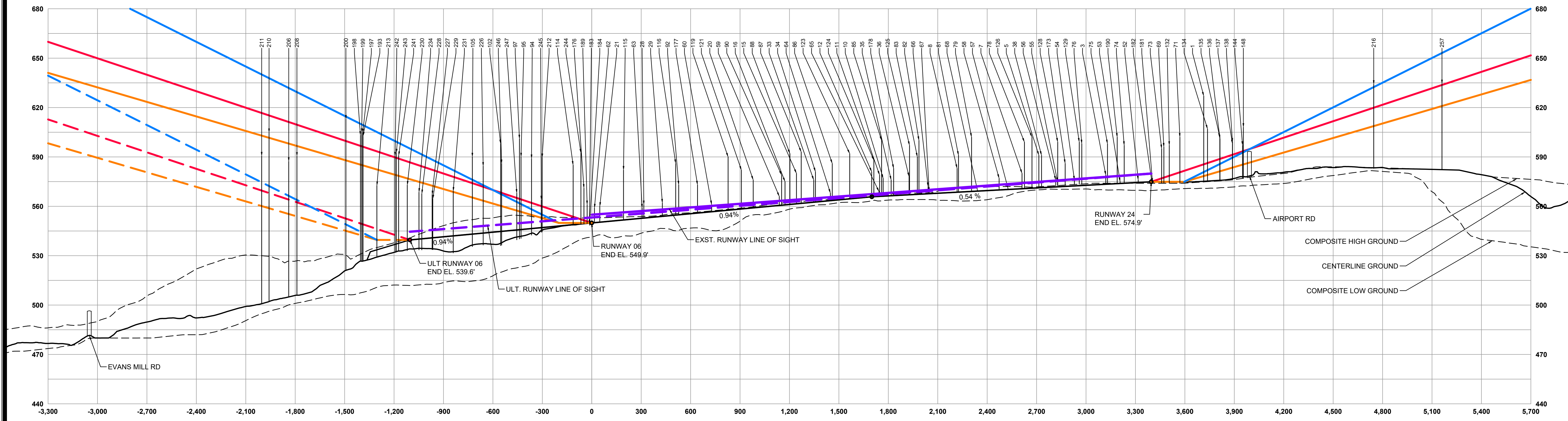
PAGELAND AIRPORT

AIRPORT LAYOUT PLAN UPDATE
RUNWAY 06-24 INNER APPROACH SURFACES OBSTRUCTION TABLE

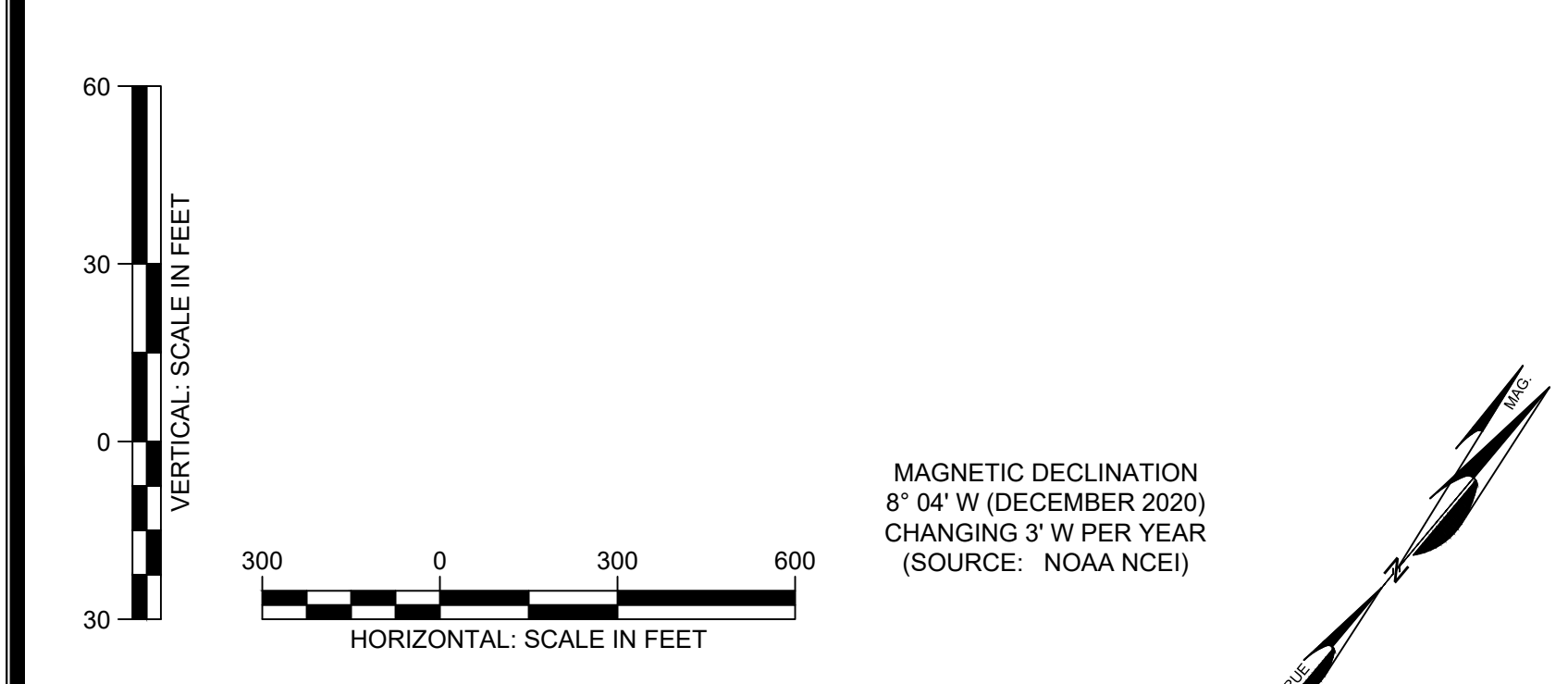
DESIGNED BY:	TSM	DATE
PROJECT ENG.:	JAS	
PROJECT NO.:	3509-2001	
DRAWN BY:	TSM	
CHECKED BY:	JAS	
DATE ISSUED:	MAY 14, 2021	



RUNWAY 06-24 - PLAN VIEW



RUNWAY 06-24 - PROFILE VIEW



- NOTES**
- ALL LATITUDE/LONGITUDE COORDINATES ARE IN NAD 83, AND ALL VERTICAL ELEVATIONS ARE IN NAVD 88.
 - FEDERAL AVIATION REGULATIONS (FAR) PART 77 SPECIFIES CLEARANCE REQUIREMENTS FOR ROADS, RAILROADS, AND WATERWAYS AS FOLLOWS:
 - 17 FEET FOR AN INTERSTATE HIGHWAY.
 - 15 FEET FOR ANY OTHER PUBLIC ROADWAY.
 - 10 FEET OR THE HEIGHT OF THE HIGHEST MOBILE OBJECT THAT WOULD NORMALLY TRAVERSE THE ROAD, WHICHEVER IS GREATER, FOR A PRIVATE ROAD.
 - 23 FEET FOR A RAILROAD, AND
 - FOR A WATERWAY OR ANY OTHER TRAVERSE WAY NOT PREVIOUSLY MENTIONED, AN AMOUNT EQUAL TO THE HEIGHT OF THE HIGHEST MOBILE OBJECT THAT WOULD NORMALLY TRAVERSE IT.
 - BASE MAPPING AND OBSTRUCTION SURVEY SOURCE: UPDATED USING DATA FROM SOUTH CAROLINA AERONAUTICS COMMISSION DRONE FLIGHT, FLOWN OCTOBER 2020.
 - REFER TO AIRPORT AIRSPACE DRAWINGS (SHEETS 5-6) FOR FURTHER OUT OBSTRUCTIONS.

LEGEND		
ITEM	EXISTING	ULTIMATE
GROUND CONTOURS	~ 1160 ~	
WOOD AREA		
ROADS (PAVED)		
WATER FEATURE		
FENCE		
AIRPORT BUILDINGS / STRUCTURES		
AIRPORT PAVED AREAS		
AIRPORT PROPERTY LINE (PL)	P	U-P
RUNWAY OBJECT FREE AREA	ROFA	U-ROFA
RUNWAY OBSTACLE FREE ZONE	ROFZ	U-ROFZ
RUNWAY SAFETY AREA	RSA	U-RSA
RUNWAY PROTECTION ZONE	RPZ	U-RPZ
BUILDING RESTRICTION LINE	BRL	U-BRL
APPROACH SURFACE		
DEPARTURE SURFACE		
PART 77 APPROACH SURFACE		
GLIDE PATH QUALIFICATION SURFACE (GQS)		
AIRPORT REFERENCE POINT (ARP)		
NAVAID CRITICAL AREA		
PAVEMENT REMOVAL		

TALBERT, BRIGHT & ELLINGTON
 ENGINEERING & PLANNING CONSULTANTS
 3525 WHITEHALL PARK DRIVE, SUITE 210
 CHARLOTTE, NORTH CAROLINA 28273
 PHONE: 704-426-6070 FAX: 704-426-6080
 NC LICENSE NO. C-1163



PAGELAND AIRPORT

**AIRPORT LAYOUT PLAN UPDATE
 RUNWAY 06-24 CENTERLINE - PLAN AND PROFILE**

DESIGNED BY:	TGM
PROJECT ENG.:	JAS
PROJECT NO.:	3509-2001
DRAWN BY:	TGM
CHECKED BY:	JAS
DATE ISSUED:	MAY 14, 2021

REVISIONS	DATE
1	
2	
3	
4	
5	

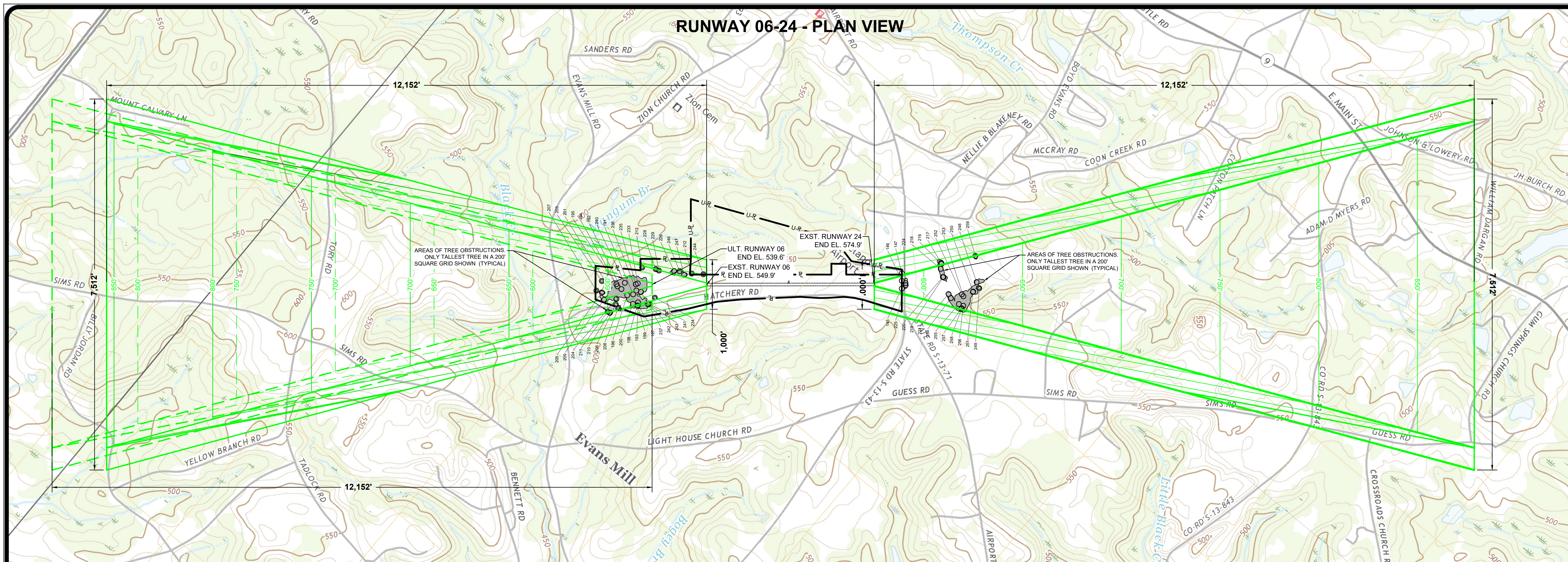
T:\3109 PAGES\2021\1 - ALP\planupdate\2021-PY06-10-11-Centerline.dwg Issues: May 17, 2021 1:17pm

OBSTRUCTION TABLE - EXISTING RUNWAY 06-24 PART 77 PRIMARY & TRANSITIONAL SURFACE						
#	DESCRIPTION	OBJECT ELEV. (AGL)	OBJECT ELEV. (AMSL)	SURFACE ELEVATION	PENETRATION	DISPOSITION
1	APBN	58.5'	627.0'	597.1'	29.9'	NO ACTION
3	BLDG	9.3'	573.0'	575.1'	3.9'	LIGHT / RELOC
5	BLDG	20.8'	591.0'	580.6'	10.4'	LIGHT / RELOC
7	BLDG	11.8'	580.0'	577.0'	3.0'	LIGHT / RELOC
8	BLDG	15.2'	583.0'	580.0'	3.0'	LIGHT / RELOC
10	BLDG	14.4'	577.0'	585.8'	-8.8'	LIGHT / RELOC
11	BLDG	15.6'	579.0'	579.2'	-0.2'	LIGHT / RELOC
12	BLDG	18.4'	581.0'	580.5'	0.5'	LIGHT / RELOC
15	BLDG	20.7'	580.0'	561.5'	18.5'	LIGHT / RELOC
16	BLDG	13.9'	575.0'	575.7'	-0.7'	LIGHT / RELOC
20	BLDG	21.5'	576.0'	583.0'	13.0'	LIGHT / RELOC
21	BLDG	17.6'	560.0'	553.6'	6.4'	LIGHT / RELOC
28	BLDG	18.2'	561.0'	567.6'	-6.6'	LIGHT / RELOC
29	BLDG	16.0'	562.0'	565.2'	-4.2'	LIGHT / RELOC
33	BLDG	13.9'	576.0'	579.4'	-3.4'	LIGHT / RELOC
34	BLDG	20.4'	581.0'	564.2'	16.8'	LIGHT / RELOC
35	BLDG	11.9'	576.0'	583.0'	-7.0'	LIGHT / RELOC
36	BLDG	12.7'	578.0'	579.2'	-1.2'	LIGHT / RELOC
38	BLDG	21.7'	591.0'	578.8'	12.2'	LIGHT / RELOC
52	FENCE	5.5'	576.0'	579.4'	-3.4'	RELOCATE
53	FENCE	3.6'	575.0'	573.9'	1.1'	RELOCATE
54	FENCE	4.3'	576.0'	572.4'	3.6'	RELOCATE
55	FENCE	4.9'	575.0'	574.6'	0.4'	RELOCATE
56	FENCE	5.0'	576.0'	571.8'	4.2'	RELOCATE
57	FENCE	4.9'	571.0'	571.9'	-0.9'	RELOCATE
58	FENCE	5.0'	577.0'	569.9'	7.1'	RELOCATE
59	FENCE	4.5'	566.0'	560.5'	5.5'	RELOCATE
60	FENCE	4.1'	561.0'	557.1'	3.9'	RELOCATE
62	FENCE	4.1'	559.0'	564.2'	-5.2'	RELOCATE
63	FENCE	4.3'	559.0'	558.2'	0.8'	RELOCATE
64	FENCE	4.0'	568.0'	563.4'	4.6'	RELOCATE
65	FENCE	5.4'	569.0'	565.0'	3.0'	RELOCATE
66	FENCE	3.9'	572.0'	567.6'	4.4'	RELOCATE
67	FENCE	4.3'	569.0'	567.7'	1.3'	RELOCATE
68	FENCE	5.2'	570.0'	569.2'	0.8'	RELOCATE
69	FLGPL	29.0'	596.0'	601.9'	-5.9'	LIGHT / LOWER
71	POLE	30.2'	602.0'	574.9'	27.1'	LIGHT / LOWER
73	POLE	29.2'	595.0'	581.4'	13.6'	LIGHT / LOWER
74	POLE	27.5'	597.0'	581.6'	15.4'	LIGHT / LOWER
75	POLE	26.0'	598.0'	573.5'	24.5'	LIGHT / LOWER
76	POLE	34.6'	598.0'	586.4'	9.6'	LIGHT / LOWER
78	POLE	29.3'	579.0'	570.8'	28.2'	LIGHT / LOWER
79	POLE	30.4'	602.0'	569.0'	33.0'	LIGHT / LOWER
81	POLE	26.4'	591.0'	568.6'	22.4'	LIGHT / LOWER
82	POLE	35.0'	600.0'	567.6'	32.7'	LIGHT / LOWER
83	POLE	22.8'	590.0'	571.0'	19.0'	LIGHT / LOWER
85	POLE	35.6'	600.0'	566.1'	33.9'	LIGHT / LOWER
86	POLE	32.3'	596.0'	591.0'	-5.1'	LIGHT / LOWER
87	POLE	32.7'	593.0'	586.2'	6.8'	LIGHT / LOWER
88	POLE	29.8'	592.0'	561.2'	30.8'	LIGHT / LOWER
90	POLE	31.9'	579.0'	588.3'	-8.3'	LIGHT / LOWER
92	POLE	39.4'	573.0'	581.5'	-8.5'	LIGHT / LOWER
94	POLE	33.0'	589.0'	586.0'	3.0'	LIGHT / LOWER
96	POLE	45.0'	601.0'	595.1'	-5.1'	LIGHT / LOWER
102	POLE	42.0'	598.0'	577.4'	23.6'	LIGHT / LOWER
114	POLE	29.4'	585.0'	569.7'	15.3'	LIGHT / LOWER
115	POLE	27.4'	582.0'	580.0'	-2.2'	LIGHT / LOWER
116	POLE	30.0'	586.0'	557.0'	29.0'	LIGHT / LOWER
119	POLE	32.1'	590.0'	558.2'	31.8'	LIGHT / LOWER
121	POLE	23.0'	582.0'	583.7'	-1.7'	LIGHT / LOWER
123	POLE	27.3'	592.0'	564.5'	27.5'	LIGHT / LOWER
124	POLE	25.3'	588.0'	583.7'	4.3'	LIGHT / LOWER
125	POLE	29.2'	597.0'	567.0'	30.0'	LIGHT / LOWER
126	POLE	30.9'	602.0'	571.0'	31.0'	LIGHT / LOWER
128	POLE	27.4'	599.0'	571.9'	27.1'	LIGHT / LOWER
129	POLE	29.2'	599.0'	570.9'	28.4'	LIGHT / LOWER
132	POLE	27.9'	597.0'	593.6'	3.4'	LIGHT / LOWER
134	POLE	39.2'	607.0'	604.2'	2.8'	LIGHT / LOWER
135	POLE	33.8'	602.0'	604.1'	-2.1'	LIGHT / LOWER
136	POLE	30.8'	601.0'	593.3'	7.7'	LIGHT / LOWER
137	POLE	29.1'	598.0'	604.8'	-6.8'	LIGHT / LOWER
138	POLE	29.3'	599.0'	593.3'	7.7'	LIGHT / LOWER
139	POLE	25.5'	597.0'	591.7'	5.3'	LIGHT / LOWER
148	POLE	34.4'	608.0'	597.4'	10.6'	LIGHT / LOWER
173	RD (N)	15.7'	586.0'	572.6'	13.4'	NOTAM
176	RD (N)	15.3'	571.0'	572.1'	-1.1'	NOTAM
177	RD (N)	16.6'	573.0'	562.3'	10.7'	NOTAM
178	RD (N)	15.7'	583.0'	566.5'	16.5'	NOTAM
181	REIL	0.8'	574.6'	574.9'	-0.3'	NO ACTION
182	REIL	0.8'	574.3'	574.9'	-0.6'	NO ACTION
183	REIL	0.8'	549.4'	549.8'	-0.4'	NO ACTION
184	REIL	0.8'	548.6'	549.8'	-1.2'	NO ACTION
189	WSK	17.3'	561.0'	549.9'	11.1'	NO ACTION
190	WSK	29.4'	602.0'	573.8'	28.2'	NO ACTION
199	TREE	81.7'	604.8'	585.6'	19.3'	TRIM / REMOVE
210	TREE	72.2'	604.8'	610.3'	-5.5'	TRIM / REMOVE
216	TREE	51.7'	634.1'	610.0'	24.1'	TRIM / REMOVE
241	TREE	58.9'	590.9'	578.9'	11.9'	TRIM / REMOVE
243	TREE	61.3'	592.4'	579.2'	13.2'	TRIM / REMOVE
244	TREE	51.1'	632.4'	545.9'	82.6'	TRIM / REMOVE
257	TREE	59.5'	634.5'	621.8'	12.7'	TRIM / REMOVE

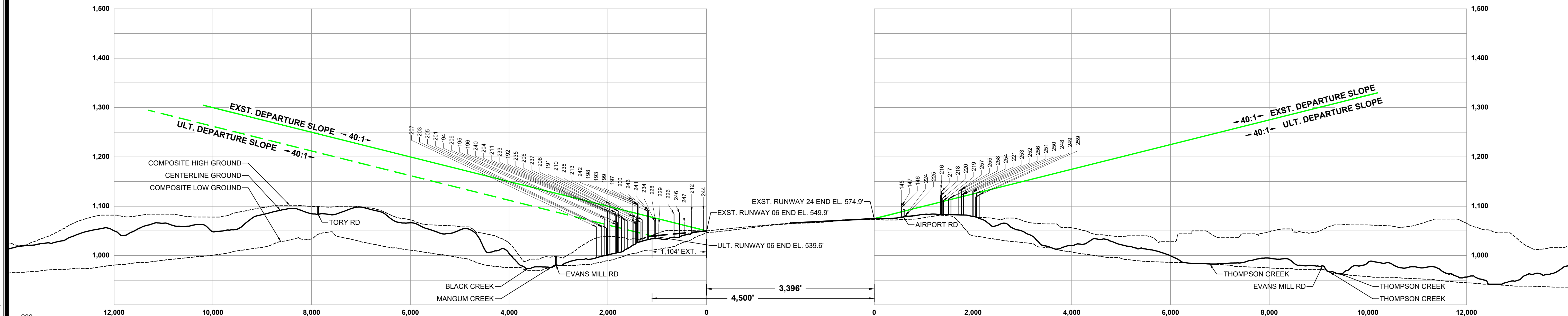
OBSTRUCTION TABLE - ULTIMATE RUNWAY 06-24 PART 77 PRIMARY & TRANSITIONAL SURFACE						
#	DESCRIPTION	OBJECT ELEV. (AGL)	OBJECT ELEV. (AMSL)	SURFACE ELEVATION	PENETRATION	DISPOSITION
1	APBN	58.5'	627.0'	597.1'	29.9'	NO ACTION
3	BLDG	9.3'	573.0'	575.1'	3.9'	LIGHT / RELOC
5	BLDG	20.8'	591.0'	580.6'	10.4'	LIGHT / RELOC
7	BLDG	11.8'	580.0'	577.0'	3.0'	LIGHT / RELOC
8	BLDG	15.2'	583.0'	580.0'	3.0'	LIGHT / RELOC
10	BLDG	14.4'	577.0'	585.8'	-8.8'	LIGHT / RELOC
11	BLDG	15.6'	579.0'	579.2'	-0.2'	LIGHT / RELOC
12	BLDG	18.4'	581.0'	580.5'	0.5'	LIGHT / RELOC
15	BLDG	20.7'	580.0'	561.5'	18.5'	LIGHT / RELOC
16	BLDG	13.9'	575.0'	575.7'	-0.7'	LIGHT / RELOC
20	BLDG	21.5'	576.0'	583.0'	13.0'	LIGHT / RELOC
21	BLDG	17.6'	560.0'	553.6'	6.4'	LIGHT / RELOC
28	BLDG	18.2'	561.0'	567.6'	-6.6'	LIGHT / RELOC
29	BLDG	16.0'	562.0'	565.2'	-4.2'	LIGHT / RELOC
33	BLDG	13.9'	576.0'	579.4'	-3.4'	LIGHT / RELOC
34	BLDG	20.4'	581.0'	564.2'	16.8'	LIGHT / RELOC
35	BLDG	11.9'	576.0'	583.0'	-7.0'	LIGHT / RELOC
36	BLDG	12.7'	578.0'	579.2'	-1.2'	LIGHT / RELOC
38	BLDG	21.7'	591.0'	578.8'	12.2'	LIGHT / RELOC
52	FENCE	5.5'	576.0'	579.4'	-3.4'	RELOCATE
53	FENCE	3.6'	575.0'	573.9'	1.1'	RELOCATE
54	FENCE	4.3'	576.0'	572.4'	3.6'	RELOCATE
55	FENCE	4.9'	575.0'	574.6'	0.4'	RELOCATE
56	FENCE	5.0'	576.0'	571.8'	4.2'	RELOCATE
57	FENCE	4.9'	571.0'	571.9'	-0.9'	RELOCATE
58	FENCE	5.0'	577.0'	569.9'	7.1'	RELOCATE
59	FENCE	4.5'	566.0'	560.5'	5.5'	RELOCATE
60	FENCE	4.1'	561.0'	557.1'	3.9'	RELOCATE
62	FENCE	4.1'	559.0'	564.2'	-5.2'	RELOCATE
63	FENCE	4.3'	559.0'	558.2'	0.8'	RELOCATE
64	FENCE	4.0'	568.0'	563.4'	4.6'	RELOCATE
65	FENCE	5.4'	569.0'	565.0'	3.0'	RELOCATE
66	FENCE	3.9'	572.0'	567.6'	4.4'	RELOCATE
67	FENCE	4.3'	569.0'	567.7'	1.3'	RELOCATE
68	FENCE	5.2'	570.0'	569.2'	0.8'	RELOCATE
69	FLGPL	29.0'	596.0'	601.9'	-5.9'	LIGHT / LOWER
71	POLE	30.2'	602.0'	574.9'	27.1'	LIGHT / LOWER
73	POLE	29.2'	595.0'	581.4'	13.6'	LIGHT / LOWER
74	POLE	27.5'	597.0'	581.6'	15.4'	LIGHT / LOWER
75	POLE	26.0'	598.0'	573.5'	24.5'	LIGHT / LOWER
76	POLE	34.6'	598.0'	586.4'	9.6'	LIGHT / LOWER
78	POLE	29.3'	579.0'	570.8'	28.2'	LIGHT / LOWER
79	POLE	30.4'	602.0'	569.0'	33.0'	LIGHT / LOWER
81	POLE	26.4'	591.0'	568.6'	22.4'	LIGHT / LOWER
82	POLE	35.0'	600.0'	567.6'	32.7'	LIGHT / LOWER
83	POLE	22.8'	590.0'	571.0'	19.0'	LIGHT / LOWER
85	POLE	35.6'	600.0'	566.1'	33.9'	LIGHT / LOWER
86	POLE	32.3'	596.0'	591.0'	-5.1'	LIGHT / LOWER
87	POLE	32.7'	593.0'	586.2'	6.8'	LIGHT / LOWER
88	POLE	29.8'	592.0'	561.2'	30.8'	LIGHT / LOWER
90	POLE	31.9'	579.0'	588.3'	-8.3'	LIGHT / LOWER
92	POLE	39.4'	573.0'	581.5'	-8.5'	LIGHT / LOWER
94	POLE	33.0'	589.0'	586.0'	3.0'	LIGHT / LOWER
96	POLE	45.0'	601.0'	595.1'	-5.1'	LIGHT / LOWER
102	POLE	42.0'	598.0'	577.4'	23.6'	LIGHT / LOWER
114	POLE	29.4'	585.0'	569.7'	15.3'	LIGHT / LOWER
115	POLE	27.4'	582.0'	580.0'	-2.2'	LIGHT / LOWER
116	POLE	30.0'	586.0'	557.0'	29.0'	LIGHT / LOWER
119	POLE	32.1'	590.0'	558.2'	31.8'	LIGHT / LOWER
121	POLE	23.0'	582.0'	583.7'	-1.7'	LIGHT / LOWER
123	POLE	27.3'	592.0'	564.5'	27.5'	LIGHT / LOWER
124	POLE	25.3'	588.0'	583.7'	4.3'	LIGHT / LOWER
125	POLE	29.2'	597.0'	567.0'	30.0'	LIGHT / LOWER
126	POLE	30.9'	602.0'	571.0'	31.0'	LIGHT / LOWER
128	POLE	27.4'	599.0'	571.9'	27.1'	LIGHT / LOWER
129	POLE	29.2'	599.0'	570.9'	28.4'	LIGHT / LOWER
132	POLE	27.9'	597.0'	593.6'	3.4'	LIGHT / LOWER
134	POLE	39.2'	607.0'	604.2'	2.8'	LIGHT / LOWER
135	POLE	33.8'	602.0'	604.1'	-2.1'	LIGHT / LOWER
136	POLE	30.8'	601.0'	593.3'	7.7'	LIGHT / LOWER
137	POLE	29.1'	598.0'	604.8'	-6.8'	LIGHT / LOWER
138	POLE	29.3'	599.0'	593.3'	7.7'	LIGHT / LOWER
139	POLE	25.5'	597.0'	591.7'	5.3'	LIGHT / LOWER
148	POLE	34.4'	608.0'	597.4'	10.6'	LIGHT / LOWER
173	RD (N)	15.7'	586.0'	572.6'	13.4'	NOTAM
176	RD (N)	15.3'	571.0'	572.1'	-1.1'	NOTAM
177	RD (N)	16.6'	573.0'	562.3'	10.7'	NOTAM
178	RD (N)	15.7'	583.0'	566.5'	16.5'	NOTAM
181	REIL	0.8'	574.6'	574.9'	-0.3'	NO ACTION
182	REIL	0.8'	574.3'	574.9'	-0.6'	NO ACTION
183	REIL	0.8'	549.4'	549.8'	-0.4'	NO ACTION
184	REIL	0.8'	548.6'	549.8'	-1.2'	NO ACTION
189	WSK	17.3'	561.0'	549.9'	11.1'	NO ACTION
190	WSK	29.4'	602.0'	573.8'	28.2'	NO ACTION
199	TREE	81.7'	604.8'	585.6'	19.3'	TRIM / REMOVE
210	TREE	72.2'	604.8'	610.3'	-5.5'	TRIM / REMOVE
216	TREE	51.7'	634.1'	610.0'	24.1'	TRIM / REMOVE
241	TREE	58.9'	590.9'	578.9'	11.9'	TRIM / REMOVE
243	TREE	61.3'	592.4'	579.2'	13.2'	TRIM / REMOVE
244	TREE	51.1'	632.4'	545.9'	82.6'	TRIM / REMOVE
257	TREE	59.5'	634.5'	621.8'	12.7'	TRIM / REMOVE

NOTES

- ALL LATITUDE/LONGITUDE COORDINATES ARE IN NAD 83, AND ALL VERTICAL ELEVATIONS ARE IN NAVD 88.
- FEDERAL AVIATION REGULATIONS (FAR) PART 77 SPECIFICS CLEARANCE REQUIREMENTS FOR ROADS, RAILROADS, AND WATERWAYS AS FOLLOWS:
 - 17 FEET FOR AN INTERSTATE HIGHWAY.
 - 15 FEET FOR ANY OTHER PUBLIC ROADWAY.
 - 10 FEET OR THE HEIGHT OF THE HIGHEST MOBILE OBJECT THAT WOULD NORMALLY TRAVERSE THE ROAD, WHICHEVER IS GREATER, FOR A PRIVATE ROAD.



RUNWAY 06-24 - PLAN VIEW



RUNWAY 06-24 - PROFILE VIEW

- NOTES**
1. ALL LATITUDE/LONGITUDE COORDINATES ARE IN NAD 83, AND ALL VERTICAL ELEVATIONS ARE IN NAVD 88.
 2. FEDERAL AVIATION REGULATIONS (FAR) PART 77 SPECIFIES CLEARANCE REQUIREMENTS FOR ROADS, RAILROADS, AND WATERWAYS AS FOLLOWS:
 - 2.A. 17 FEET FOR AN INTERSTATE HIGHWAY.
 - 2.B. 15 FEET FOR ANY OTHER PUBLIC ROADWAY.
 - 2.C. 10 FEET OR THE HEIGHT OF THE HIGHEST MOBILE OBJECT THAT WOULD NORMALLY TRAVERSE THE ROAD, WHICHEVER IS GREATER, FOR A PRIVATE ROAD.
 - 2.D. 23 FEET FOR A RAILROAD, AND
 - 2.E. FOR A WATERWAY OR ANY OTHER TRAVERSE WAY NOT PREVIOUSLY MENTIONED, AN AMOUNT EQUAL TO THE HEIGHT OF THE HIGHEST MOBILE OBJECT THAT WOULD NORMALLY TRAVERSE IT.
 3. BASE MAPPING AND OBSTRUCTION SURVEY SOURCE: UPDATED USING DATA FROM SOUTH CAROLINA AERONAUTICS COMMISSION DRONE FLIGHT, FLOWN OCTOBER 2020.
 3. REFER TO AIRPORT AIRSPACE DRAWINGS (SHEETS 5-6) FOR FURTHER OUT OBSTRUCTIONS.

VERTICAL SCALE IN FEET

HORIZONTAL SCALE IN FEET

MAGNETIC DECLINATION
8° 04' W (DECEMBER 2020)
CHANGING 3' W PER YEAR
(SOURCE: NOAA NCEI)

DATE	REVISIONS
	1
	2
	3
	4
	5

DESIGNED BY:	TGM
PROJECT ENG.:	JAS
PROJECT NO.:	3509-2001
DRAWN BY:	TGM
CHECKED BY:	JAS
DATE ISSUED:	MAY 14, 2021



PAGELAND AIRPORT

AIRPORT LAYOUT PLAN UPDATE

RUNWAY 06-24 DEPARTURE SURFACE - PLAN AND PROFILE

SCALE: HORIZONTAL = 1"=100'
VERTICAL = 1"=10'

FILE NAME: 2001-PYG-12-13-Departure.dwg

TALBERT, BRIGHT & ELLINGTON
ENGINEERING & PLANNING CONSULTANTS
3525 WHITEHALL PARK DRIVE, SUITE 210
CHARLOTTE, NORTH CAROLINA 28273
PHONE: 704-426-6070 FAX: 704-426-6080
NC LICENSE NO. C-1163

OBSTRUCTION TABLE - EXISTING RUNWAY 24 DEPARTURE SURFACE						
#	DESCRIPTION	OBJECT ELEV. (AGL)	OBJECT ELEV. (AMSL)	SURFACE ELEVATION	PENETRATION	DISPOSITION
145	POLE	21.5'	598.0'	588.8'	9.2'	LIGHT / LOWER
146	POLE	21.5'	598.0'	588.8'	9.2'	LIGHT / LOWER
147	POLE	25.9'	601.0'	604.0'	-3.0'	NO ACTION
216	TREE	51.7'	634.1'	621.2'	12.9'	TRIM / REMOVE
217	TREE	47.6'	629.9'	616.2'	13.7'	TRIM / REMOVE
218	TREE	38.7'	621.7'	608.5'	13.1'	TRIM / REMOVE
219	TREE	28.0'	611.4'	610.0'	1.4'	TRIM / REMOVE
220	TREE	33.0'	616.4'	609.8'	6.8'	TRIM / REMOVE
221	TREE	32.9'	614.9'	612.5'	2.4'	TRIM / REMOVE
224	TREE	3.5'	581.6'	590.7'	-9.1'	NO ACTION
225	TREE	3.5'	581.6'	590.8'	-9.2'	NO ACTION
248	TREE	48.9'	626.5'	626.7'	-0.2'	NO ACTION
249	TREE	48.8'	623.4'	628.0'	-4.6'	NO ACTION
250	TREE	51.7'	629.0'	625.0'	4.0'	TRIM / REMOVE
251	TREE	53.9'	630.7'	624.8'	5.9'	TRIM / REMOVE
252	TREE	44.0'	623.1'	619.3'	3.9'	TRIM / REMOVE
253	TREE	56.2'	626.5'	620.1'	6.4'	TRIM / REMOVE
254	TREE	37.5'	618.0'	613.7'	4.3'	TRIM / REMOVE
255	TREE	57.0'	630.7'	617.7'	13.0'	TRIM / REMOVE
256	TREE	57.7'	623.8'	619.9'	3.9'	TRIM / REMOVE
267	TREE	58.5'	634.5'	618.0'	15.5'	TRIM / REMOVE
258	TREE	60.2'	633.9'	619.2'	14.7'	TRIM / REMOVE
259	TREE	42.1'	618.6'	626.1'	-7.5'	NO ACTION

OBSTRUCTION TABLE - ULTIMATE RUNWAY 24 DEPARTURE SURFACE						
#	DESCRIPTION	OBJECT ELEV. (AGL)	OBJECT ELEV. (AMSL)	SURFACE ELEVATION	PENETRATION	DISPOSITION
207	TREE	60.5'	552.2'	557.8'	-9.6'	NO ACTION
203	TREE	60.8'	558.0'	565.0'	-7.0'	NO ACTION
201	TREE	54.9'	555.9'	562.7'	-6.7'	NO ACTION
205	TREE	58.1'	559.3'	565.1'	-5.7'	NO ACTION
196	TREE	55.2'	570.5'	568.9'	1.7'	TRIM / REMOVE
204	TREE	71.5'	582.5'	579.8'	2.7'	TRIM / REMOVE
237	TREE	33.5'	567.6'	564.3'	3.3'	TRIM / REMOVE
194	TREE	57.5'	562.8'	557.6'	5.1'	TRIM / REMOVE
209	TREE	70.5'	576.7'	569.5'	7.2'	TRIM / REMOVE
191	TREE	55.4'	579.0'	570.5'	8.6'	TRIM / REMOVE
195	TREE	60.8'	568.9'	557.2'	9.7'	TRIM / REMOVE
233	TREE	37.9'	563.4'	546.8'	16.6'	TRIM / REMOVE
235	TREE	44.2'	568.4'	547.9'	20.6'	TRIM / REMOVE
240	TREE	63.8'	574.2'	553.4'	20.8'	TRIM / REMOVE
192	TREE	70.6'	579.2'	555.1'	24.1'	TRIM / REMOVE
238	TREE	46.6'	576.8'	549.9'	26.9'	TRIM / REMOVE

OBSTRUCTION TABLE - EXISTING / ULTIMATE RUNWAY 06 DEPARTURE SURFACE						
#	DESCRIPTION	OBJECT ELEV. (AGL)	OBJECT ELEV. (AMSL)	SURFACE ELEVATION	PENETRATION	DISPOSITION
244	TREE	51.1'	592.4'	602.3'	-9.9'	NO ACTION
213	TREE	58.3'	572.6'	582.5'	-9.9'	NO ACTION
228	TREE	49.6'	567.7'	577.4'	-9.7'	NO ACTION
229	TREE	45.8'	564.5'	574.0'	-9.5'	NO ACTION
211	TREE	60.6'	590.6'	600.0'	-9.4'	NO ACTION
238	TREE	46.8'	576.8'	585.5'	-8.7'	NO ACTION
206	TREE	72.8'	587.3'	595.9'	-8.6'	NO ACTION
191	TREE	55.4'	579.0'	587.1'	-8.1'	NO ACTION
246	TREE	62.6'	585.9'	593.7'	-7.7'	NO ACTION
234	TREE	25.7'	568.5'	578.1'	-7.6'	NO ACTION
247	TREE	40.2'	568.0'	574.6'	-6.7'	NO ACTION
241	TREE	58.9'	590.9'	596.7'	-5.8'	NO ACTION
208	TREE	67.2'	590.4'	594.7'	-4.2'	NO ACTION
243	TREE	61.3'	592.4'	596.2'	-3.8'	NO ACTION
226	TREE	64.4'	584.4'	587.7'	-3.3'	NO ACTION
212	TREE	58.5'	589.6'	592.8'	-3.2'	NO ACTION
242	TREE	59.7'	590.6'	593.7'	-3.1'	NO ACTION
210	TREE	72.2'	604.8'	605.1'	-0.3'	NO ACTION
199	TREE	81.7'	604.8'	593.9'	10.9'	TRIM / REMOVE
180	TREE	80.1'	603.1'	591.4'	11.7'	TRIM / REMOVE
197	TREE	82.2'	604.6'	591.9'	12.8'	TRIM / REMOVE
193	TREE	80.7'	602.6'	584.6'	18.0'	TRIM / REMOVE
200	TREE	69.0'	612.9'	587.2'	25.7'	TRIM / REMOVE

NOTES

- ALL LATITUDE/LONGITUDE COORDINATES ARE IN NAD 83, AND ALL VERTICAL ELEVATIONS ARE IN NAVD 88.
- FEDERAL AVIATION REGULATIONS (FAR) PART 77 SPECIFIES CLEARANCE REQUIREMENTS FOR ROADS, RAILROADS, AND WATERWAYS AS FOLLOWS:
 - 17 FEET FOR AN INTERSTATE HIGHWAY,
 - 15 FEET FOR ANY OTHER PUBLIC ROADWAY,
 - 10 FEET OR THE HEIGHT OF THE HIGHEST MOBILE OBJECT THAT WOULD NORMALLY TRAVERSE THE ROAD, WHICHEVER IS GREATER, FOR A PRIVATE ROAD.
 - 23 FEET FOR A RAILROAD, AND
 - FOR A WATERWAY OR ANY OTHER TRAVERSE WAY NOT PREVIOUSLY MENTIONED, AN AMOUNT EQUAL TO THE HEIGHT OF THE HIGHEST MOBILE OBJECT THAT WOULD NORMALLY TRAVERSE IT.
- BASE MAPPING AND OBSTRUCTION SURVEY SOURCE: UPDATED USING DATA FROM SOUTH CAROLINA AERONAUTICS COMMISSION DRONE FLIGHT, FLOWN OCTOBER 2020.
- THE TRIGGERING EVENT FOR THE MAJORITY OF THE OBSTRUCTIONS IS SIMPLE TREE GROWTH. THE EXISTING AND ULTIMATE CONDITIONS WERE DETERMINED INDIVIDUALLY, SO IF AN OBSTACLE IS AN EXISTING OBSTRUCTION IT COULD BE AN ULTIMATE OBSTRUCTION. THE ULTIMATE TRIGGERING EVENT FOR RUNWAY 06-24 WAS EXTENSION OF RUNWAY 06. TIME-FRAME / EXPECTED DATE FOR REMOVAL IS BASED ON FUNDING AVAILABILITY AND PRIORITY, AS OUTLINED ON THE CIP. FUNDING TABLE ILLUSTRATING 0 TO 5 - YEAR, 6 TO 10 - YEAR, AND 10+ YEAR PROJECTS ARE OUTLINED IN THE ALP NARRATIVE.

TALBERT, BRIGHT & ELLINGTON
 ENGINEERING & PLANNING CONSULTANTS
 3525 WHITEHALL PARK DRIVE, SUITE 210
 CHARLOTTE, NORTH CAROLINA 28273
 PHONE: 704-426-6070 FAX: 704-426-6080
 NC LICENSE NO. C-1163

DESIGNED BY:	TCM	DATE
PROJECT ENG.:	JAS	
PROJECT NO.:	3509-2001	
DRAWN BY:	TCM	
CHECKED BY:	JAS	
DATE ISSUED:	MAY 14, 2021	

REVISIONS	DATE
1	
2	
3	
4	
5	



PAGELAND AIRPORT

AIRPORT LAYOUT PLAN UPDATE
RUNWAY 06-24 DEPARTURE SURFACE OBSTRUCTION TABLES
 FILE NAME: 2001-PYG-12-13-Departure.dwg
 SCALE: NONE